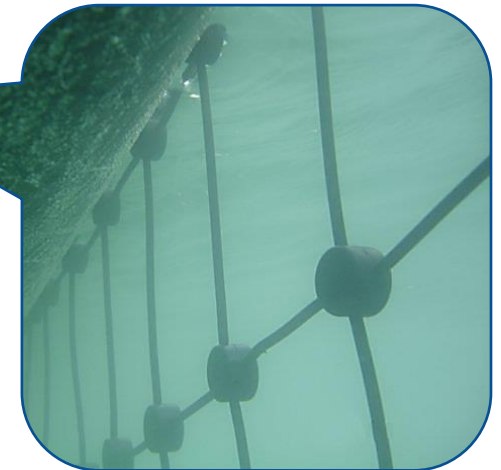


# MARINET

## Maritime Perimeter Protection Barrier



floating barrier, Harbor Offshore



# RBtec Introduction

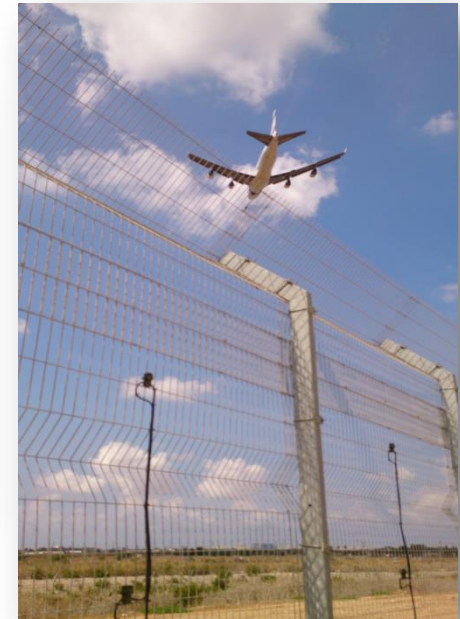


[www.rbtec.com](http://www.rbtec.com)

Since 1986 **RBtec** has been recognized as a leading technology company specializing in the design, development, and manufacturing of quality outdoor perimeter detection systems and technologies (PIDS).

**RBtec** provides reliable, effective and affordable solutions suitable for any site where a first line of defense is required.

**RBtec** specialize in providing tailor made security projects, integrating various technologies.



# Maritime Threats An Uprising Challenge



[www.rbtec.com](http://www.rbtec.com)

The ability to operate in open seas successfully for terrorism purposes has led to a dramatic increase in piracy, illegal smuggling, and illegal human trafficking across borders over the last decade.

Therefore, in the years to come there's a high probability terrorists will utilize their expertise in other forms of maritime crimes to launch more damaging attacks and exploiting vulnerabilities in the global maritime environment.

- ✓ Terrorist infiltration by form of underwater diving/fast powerful speed boats who seek to commit suicide bombing/terrorist attacks/vessel hijacking/kidnapping of civilians.
- ✓ Sabotage attempts in order to damage high-security assets and critical infrastructures.





# The Solution **MARINET System**



[www.rbtec.com](http://www.rbtec.com)

The MARINET is a unique defense net barrier designed for installation in water environment.

The MARINET is designed to be Installed above and under water to block divers, boats and objects from entering into the protected water side.

The barrier is available for installation in various configurations according to the customer infrastructure and security needs.

The MARINET is designed to protect entrances to ports and open water ways such as under docks, foundation of drilling and oil platforms and waterway inputs and outputs for power stations.

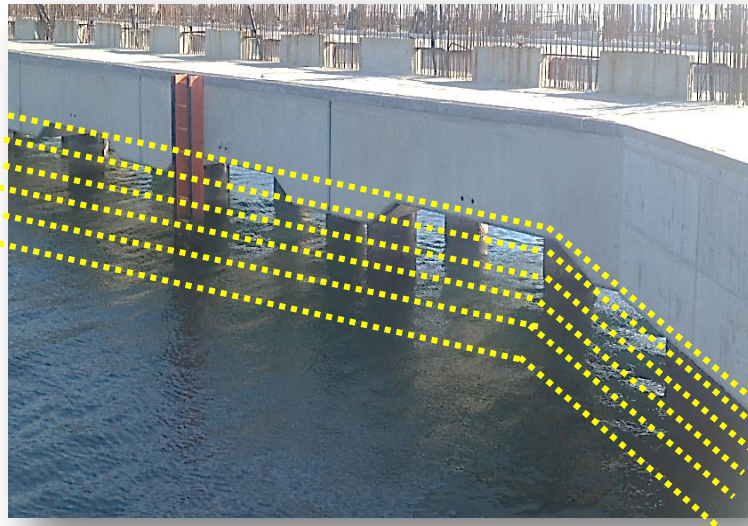




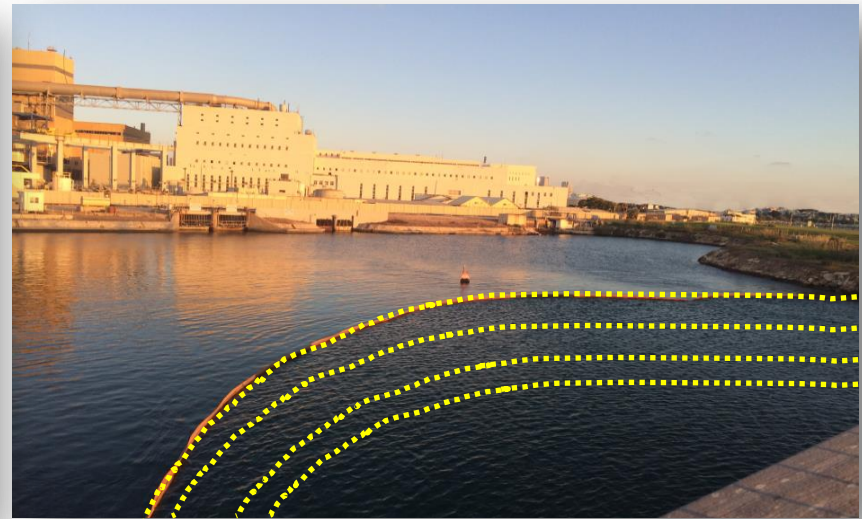
**Floating Platforms**



**Water Passages**



**Docks and Jetty**



**Water Inlet Into Power Stations**



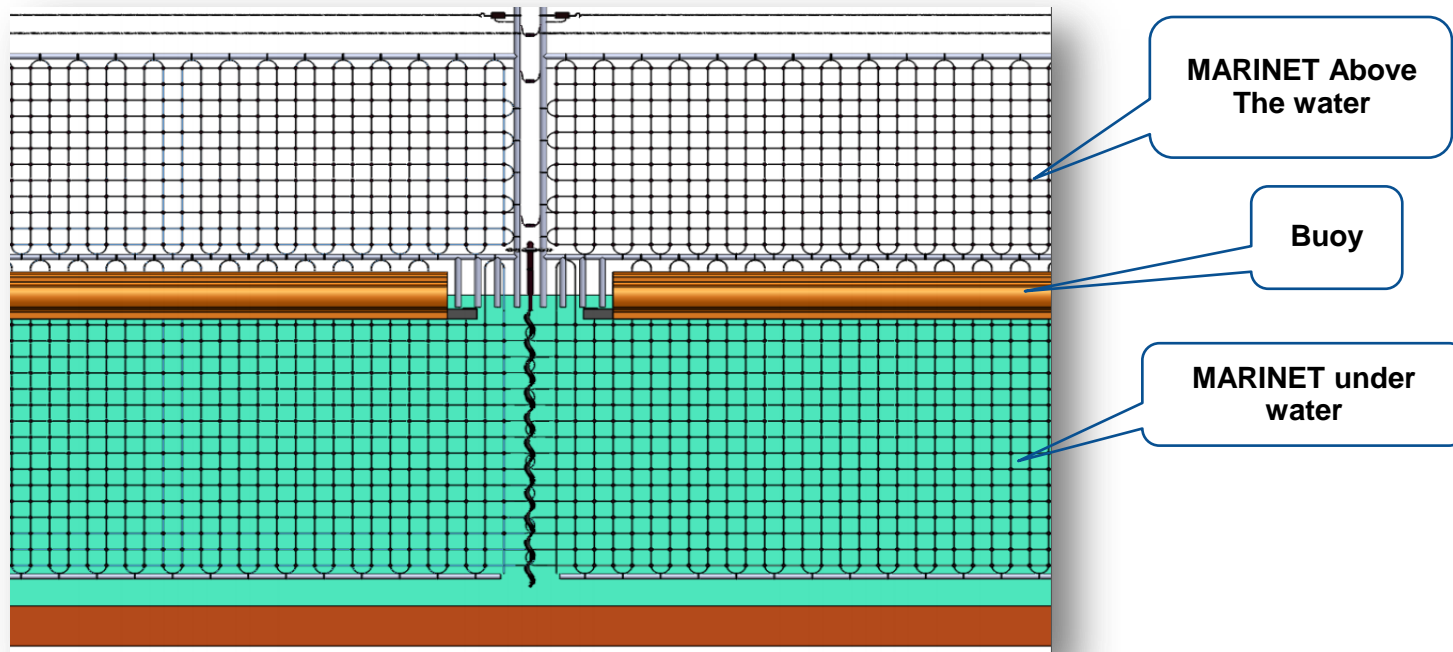
# Installation Methods Floating System



[www.rbtec.com](http://www.rbtec.com)

When installed above and under a buoy the MARINET is divided into separate panels. Each panel is 5m/16ft wide.

The installation and panel depth are modified to client needs and specific infrastructure.



# Installation Methods Fixed Structure

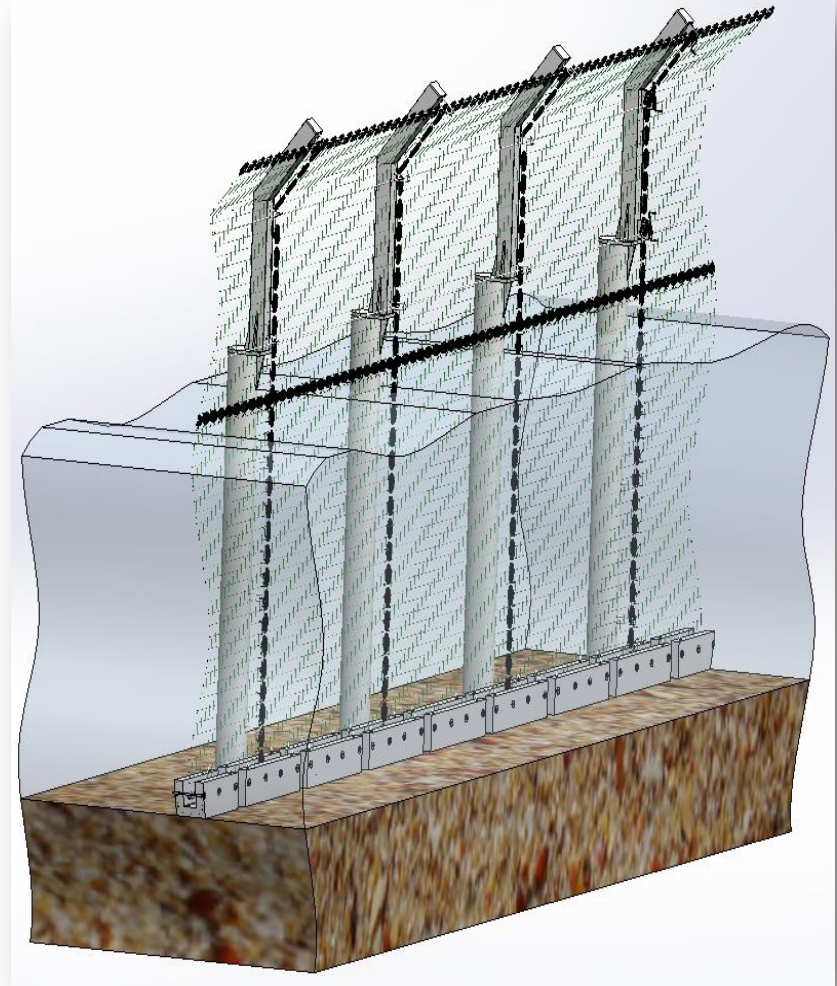


[www.rbtec.com](http://www.rbtec.com)

On fixed structures the MARINET net is anchored to the sea bed.

The system can be adjusted and fitted to any man made underwater construction platform. It is suitable for use in depths of up to 30m/98ft of water.

The installation is modified to client needs and infrastructure.



# Installation Methods

## Small Opening in a Fixed Structure

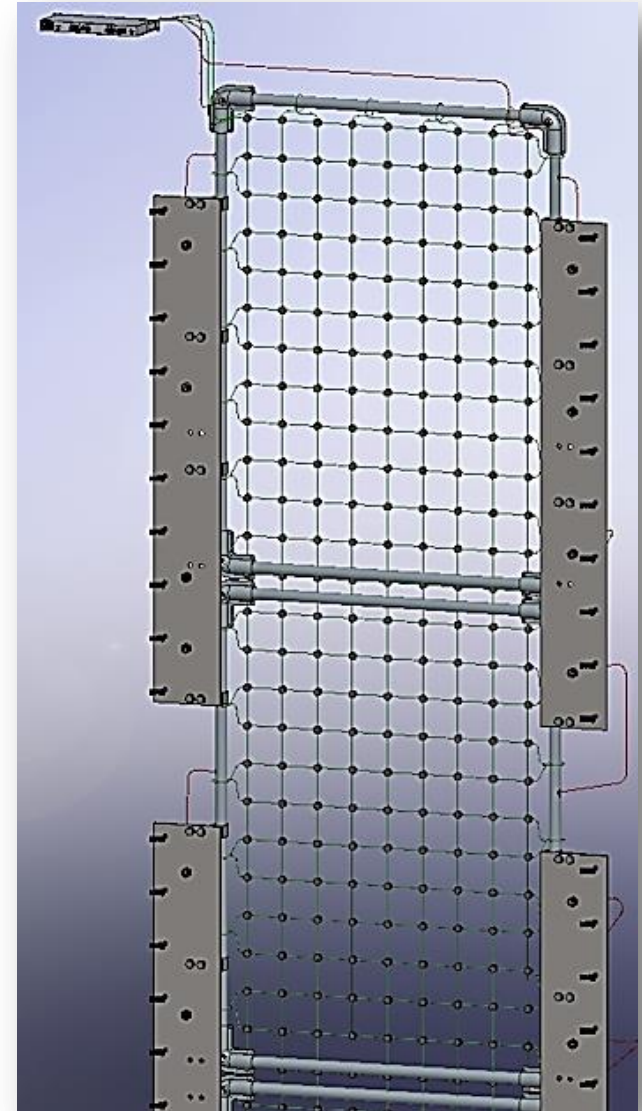


[www.rbtec.com](http://www.rbtec.com)

On small opening applications the MARINET will be anchored to a secured frame of the construction.

This application is suitable for windows, passages and small openings under the water.

the installation is modified to client needs and infrastructure.

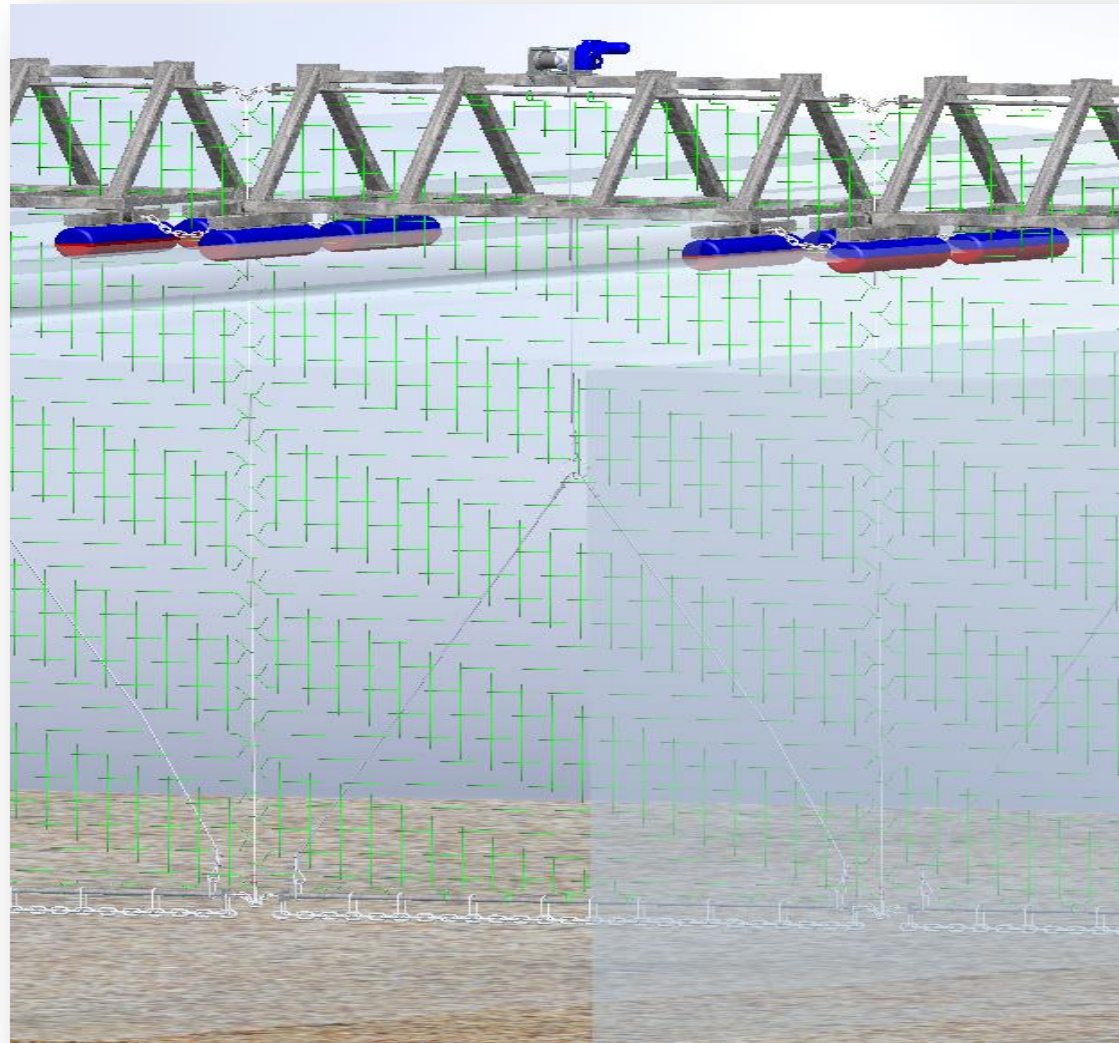




# Installation Methods floating barrier



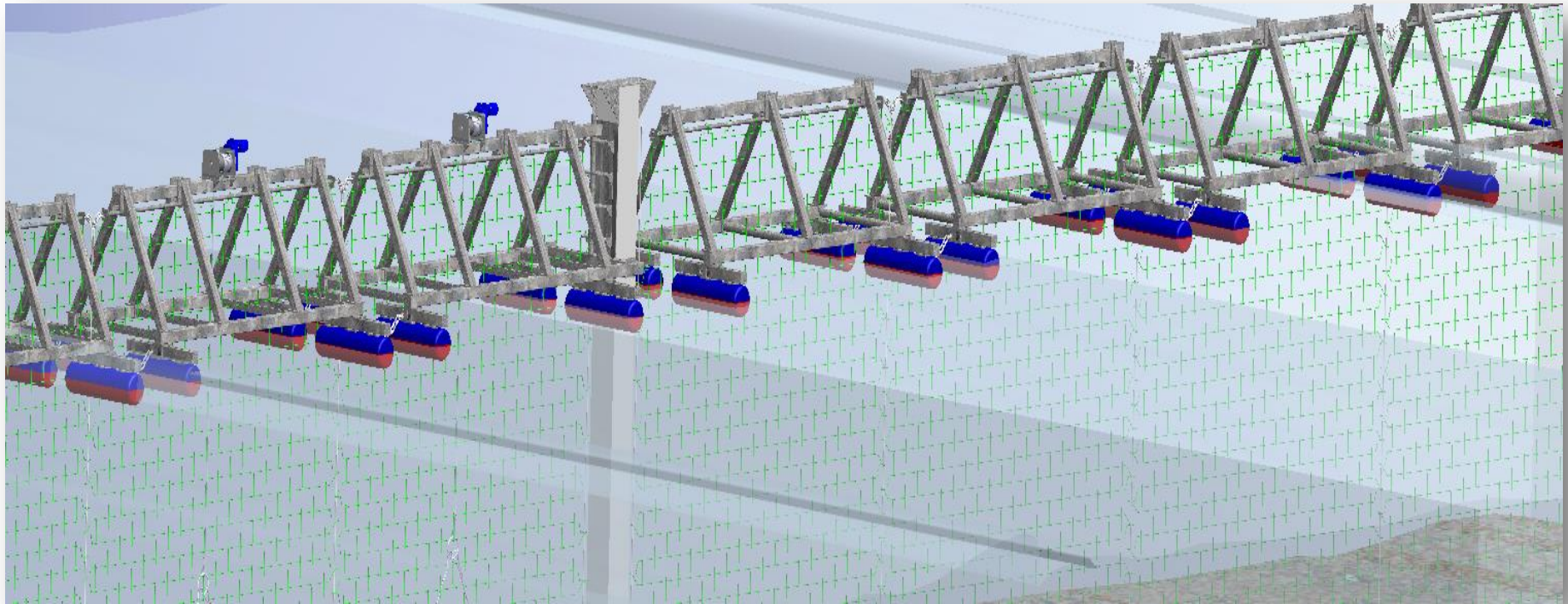
[www.rbtec.com](http://www.rbtec.com)



# Installation Methods floating barrier and gate



[www.rbtec.com](http://www.rbtec.com)





# Advantages



[www.rbtec.com](http://www.rbtec.com)

- ✓ Physical barrier with 100% detection ability.
- ✓ Extremely low false alarms rate - Zero nuisance alarms.
- ✓ Adjusts to structures shape or stands independently.
- ✓ Suitable for harsh, corrosive environments.
- ✓ Not affected by polluted, murky water or low vision.
- ✓ Can be installed in all types of salty water.
- ✓ Detects intruders all year round, day & night, and in severe weather conditions.
- ✓ Wind, rain and waves resistant.
- ✓ Smart monitoring enabled for debris and ice.
- ✓ Fully integrated with RBtec Vidalert control and monitoring system.
- ✓ Can be integrated with early detection systems (sonar/radar).



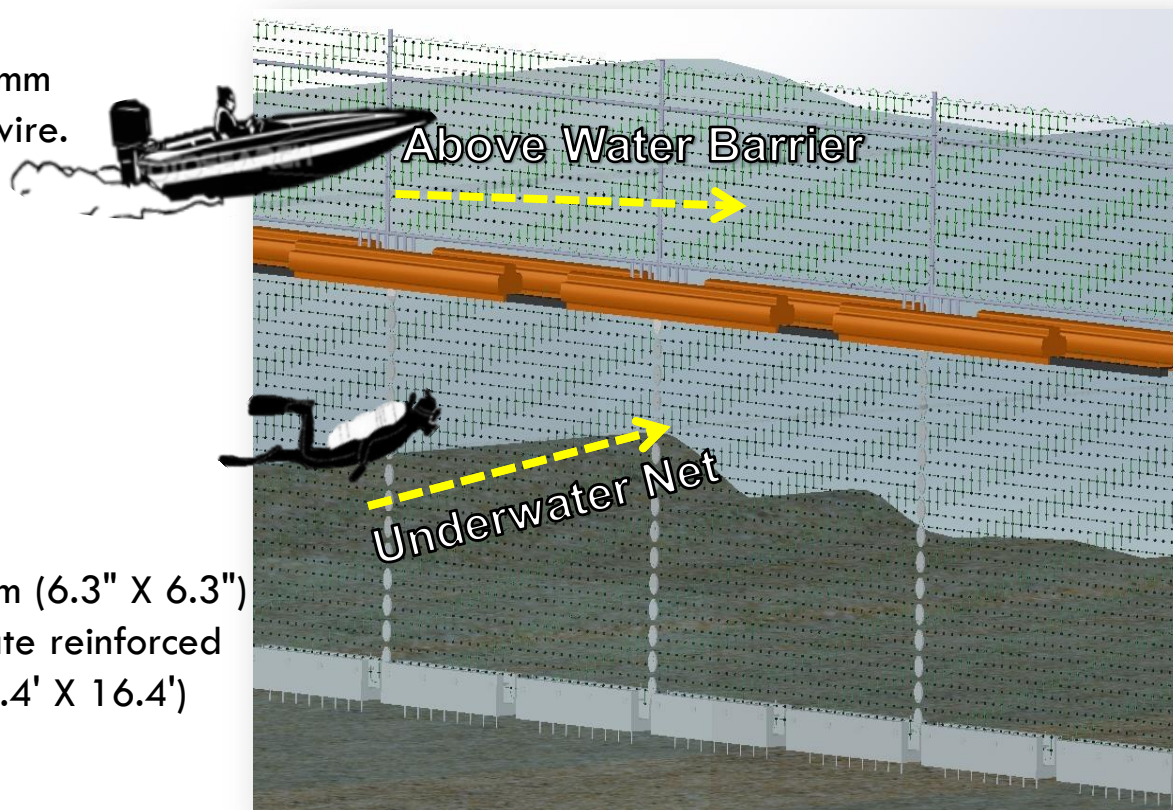


# Technical Specification



[www.rbtec.com](http://www.rbtec.com)

- Operating temps: -40° C- +70° C (-40° F - +70° F)
- Detection level: 99.9%
- Max crash resistance: 100 N/CM
- Min. Bend radius for operating: 25mm
- Type of cable: Fiber optic based wire.
- Number of fibers: 2
- Inner jacket: Polyethylene
- Outer jacket: PVC
- UV resistance: Yes
- Max. Tensile strength:  
Short term 1500N
- Weight of 5X5: 25kg.
- Cable diameter: 5.5mm
- Standard Square Size: 160x160mm (6.3" X 6.3")
- Clips: Sealed, molded polycarbonate reinforced
- Size of standards panel: 5x5m (16.4' X 16.4')
- Resolution of detection - By zones:  
1m to 200m long for each zone.



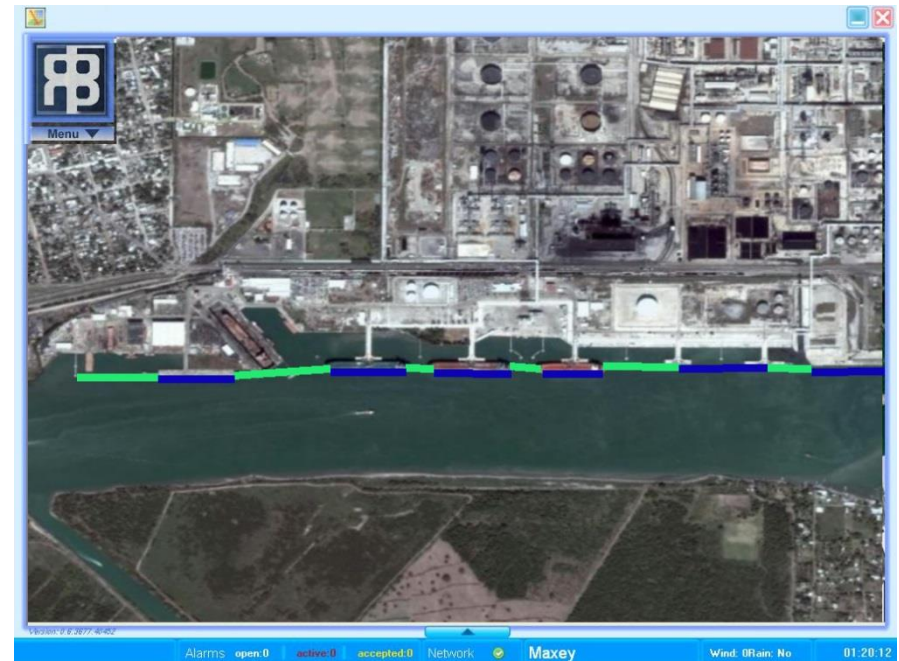
# Monitoring Center VIDALERT Alarm Management System



[www.rbtec.com](http://www.rbtec.com)

Any intrusion attempt, by cutting, climbing or breaking through the MARINET will immediately be detected and indicated on the site map. Alarms are shown on a graphic site map and announced audibly by a voice or beep thus enhancing security personnel reaction time

All alarms, commands and events are stored for analysis and hard copy reports are printed.







# RBtec inc.

Email: [Info@rbtec.com](mailto:Info@rbtec.com)

[www.rbtec.com](http://www.rbtec.com)

## THANK YOU!

All images are for illustration only

Marketing-February 2016

This document has been written and produced by RBtec to provide the reader with as much technical and other information as possible about RBtec its products and its services.  
Copying any of its contents without prior permission from RBtec is strictly prohibited.  
This information is provided for the purpose of initial evaluation of RBtec's products and services.  
In keeping with RBtec's policy of continuous development, RBtec Ltd. reserves the right to alter these specifications without notice.