



# **Physical Cyber Security System**

**Long and Short Physical  
Protection of  
Communication  
Infrastructure**

**Protective Distribution  
System (PDS)**

# Physical Cyber Security system

## System Introduction:

The system is designed to protect and detect any attempt to sabotage, cut, drill and tamper communication infrastructure such as conduits, pipes, cable trays and raceways.

- **SHORT RANGE** -The short range version is copper based sensor cable can be attached to the pipe/tray or threaded in the pipe for short ranges.  
Connects to any alarm system.
- **MEDIUM & LONG RANGE** - Long range systems are based Fiber Optics and can be installed using dark fibers in existing fiber optic cable or by using a new separate fiber cable threaded in the pipe.  
Can be monitored by alarm system or by software.

# Short Range - Infrastructure Protection

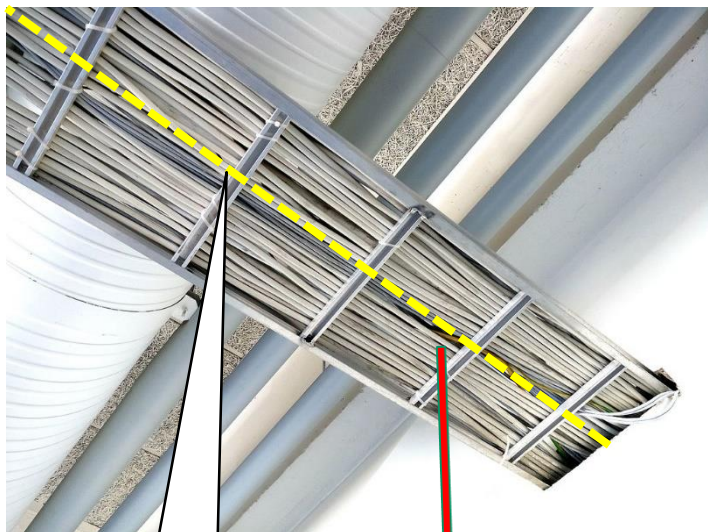


Physical Cyber  
Security System Up  
To 2000ft/600m  
Per Processor

Protective  
Distribution System  
(PDS)



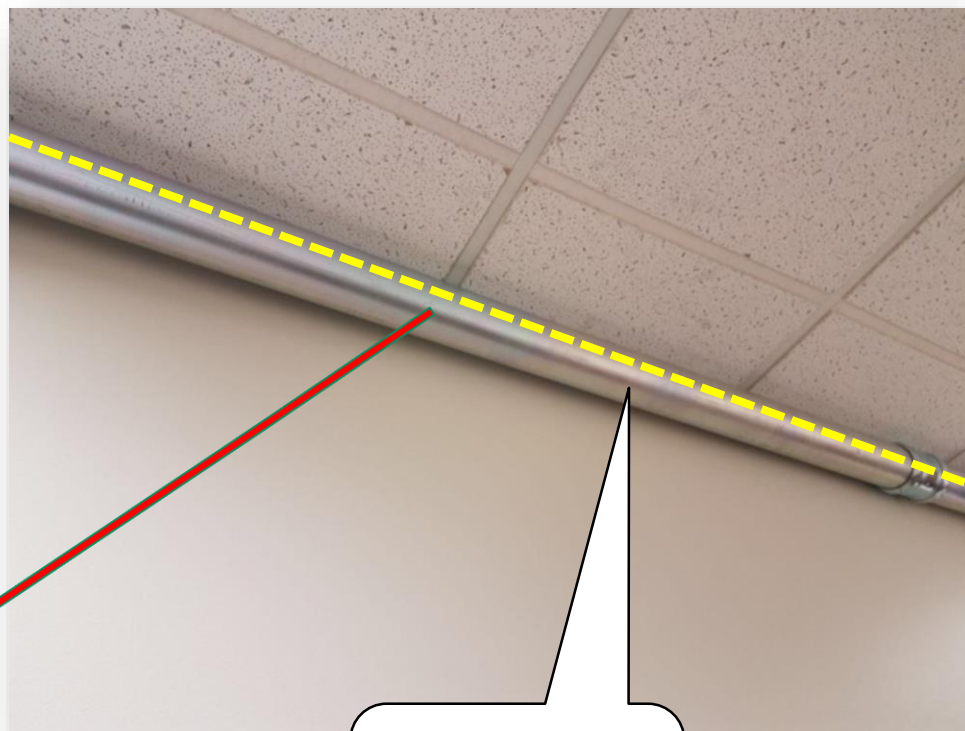
# The Ideal Solution Against Physical Hacking



On Cable  
Tray and  
Raceway

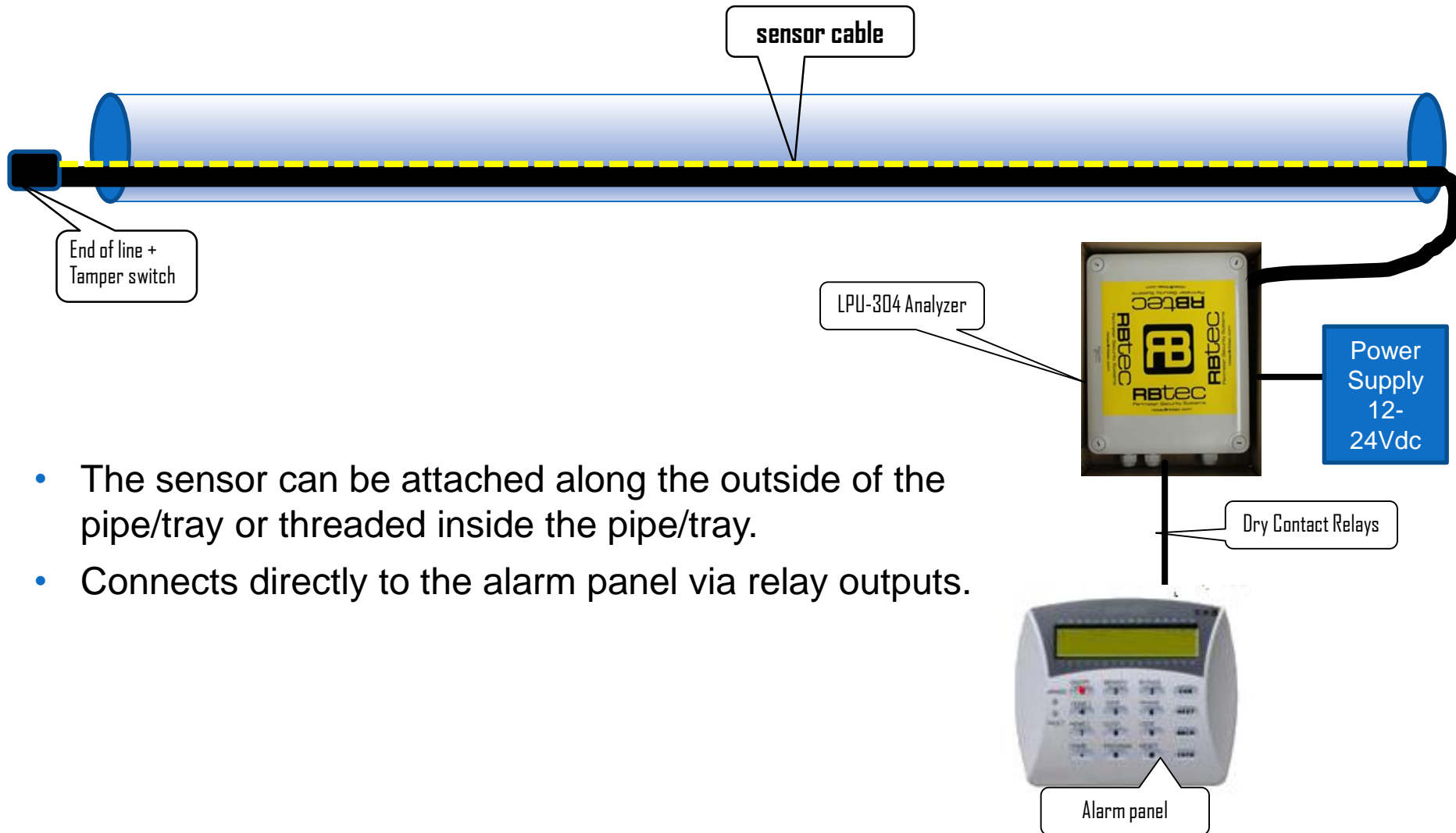


Alarm panel



Above/Under  
Dropped  
Ceiling

# Easy and Simple To Install



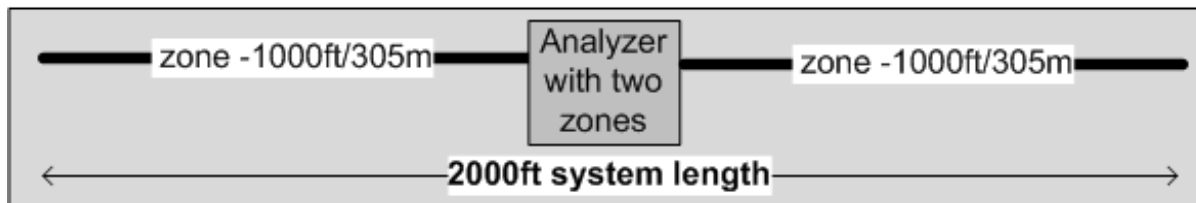
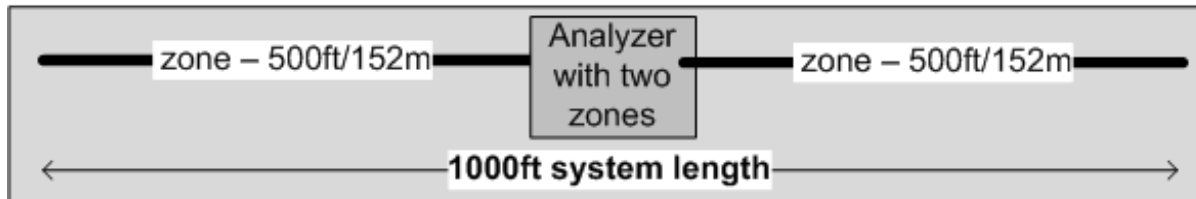
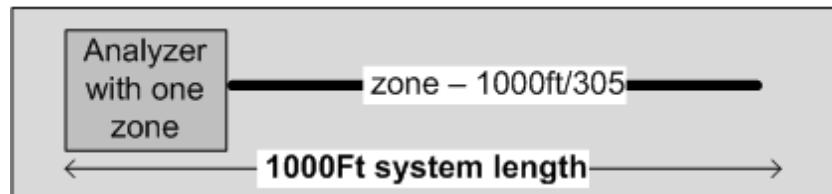
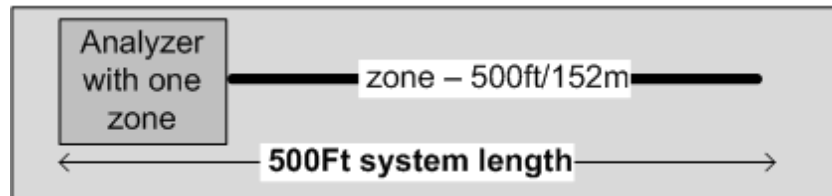
- The sensor can be attached along the outside of the pipe/tray or threaded inside the pipe/tray.
- Connects directly to the alarm panel via relay outputs.

# System Description

- The sensor can be attached or threaded thru communication conduit and cable raceway to detect any drilling, tapping, lifting or another method to reach the protected communication cables.
- Each processor can monitor up to 2 zones with 2 separate relay output per zone, the zones are sold pre-cut in 500'/1000' (152m/305m).
- The system is designed to connect to any alarm system /DVR/NVR/SCADA system.
- The sensor is ideal for installation on any pipe and tray, metal or plastic.
- The system utilizes 3 layers of false alarm filtration - Algorithm of detection based on the frequency of vibrations detecting only vibrations associated with intrusion, 22 levels of sensitivity easily adjusted with dip switches.



# Standard kits



# Advantages and Features

## The Easiest and Most Reliable System!

### System advantage

- The system complements any alarm system, as well as integrates with CCTV camera system.
- The system is unique in its ability to protect most types of communication infrastructures.

### Features

- Plug and Deploy - Ready for installation affordable kits.
- 3 Layers of False Alarm Filtration - Extreme low false alarm rate.
- Protects all types of communication infrastructures with a single run of cable.
- No training or special tools needed, comes with installation manual.
- No calibration - The system self-calibrates.
- Maintenance free - 2 years warranty on the sensor cable.
- 22 Levels of sensitivity per zone easily adjusted with dip switches.
- Dry contact relay outputs (NO or NC), can be connected to any alarm system/DVR.



# Packaging Per Kit

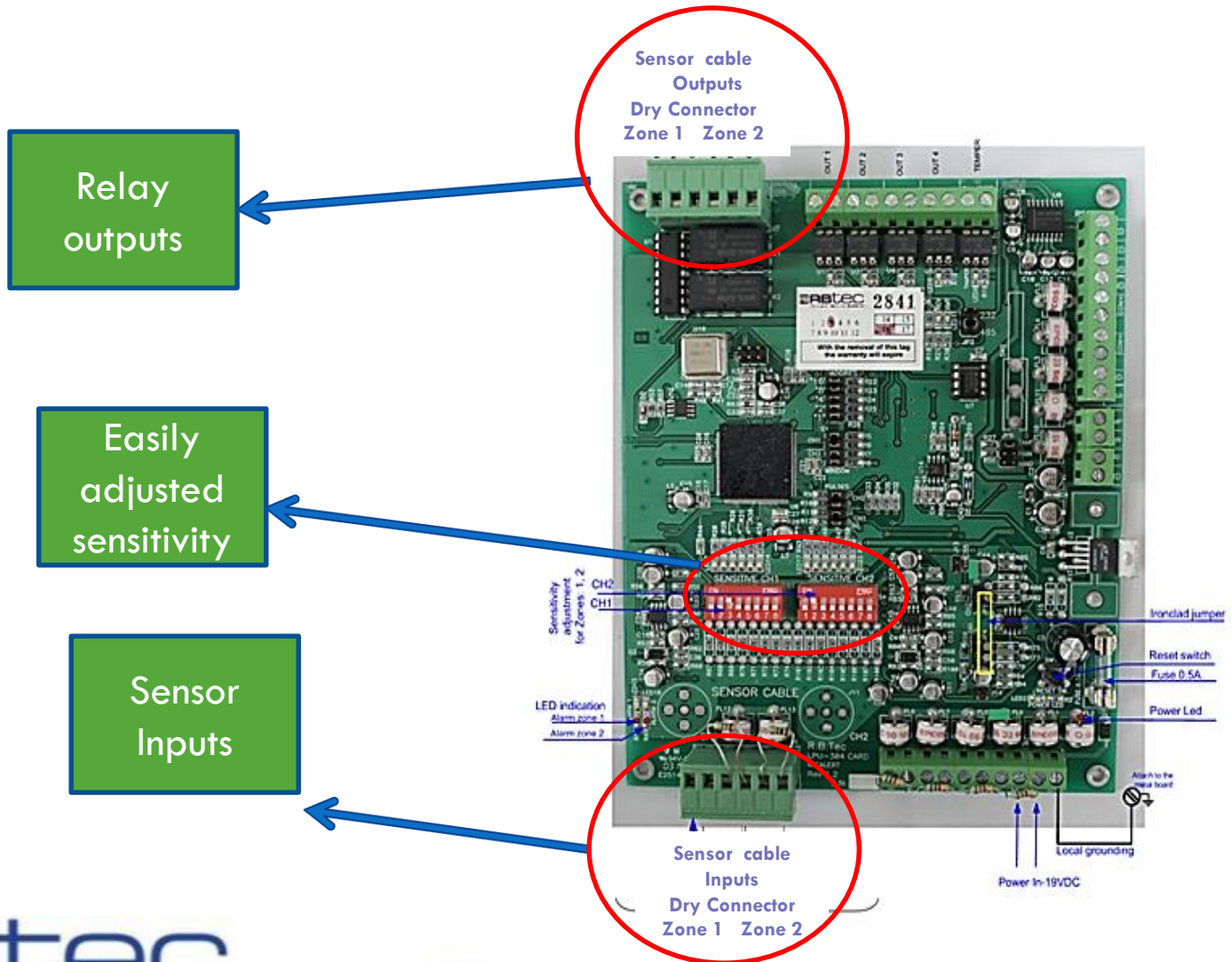


Sensor cable on spool



LPU-304  
Analyzer/Processor

# LPU-304 ANALYZER ONE OR TWO ZONES



# Frequently Asked Questions

➤ **What does the kit include?**

The Kit includes at least one spool of sensor cable in the length of choice, End line resistor pre-installed on the cable and LPU304 (The analyzer/processor) in a weatherproof enclosure.

➤ **Where to do I connect the system to?**

Each analyzer has 2 dry contact relay outputs NO/NC, those outputs can be connected to ANY alarm system, CCTV system or any other system that can accept dry contact input such as sirens, strobe lights and even fire alarms.

➤ **How long pipe can be cover with the sensor?**

The sensor cable comes in spools of 500ft (150m) and 1000ft (300m) ready to install.

Each Analyzer can monitor up to 2 zones which mean the largest perimeter that can be covered with 1 kit is 2000ft (600m).

**In order to cover longer conduits kits can be combined to cover the whole line.**

➤ **Can the sensitivity of the sensor be adjusted?**

Sure! The system has 22 levels of sensitivity that can be adjusted easily with dip switches.

No need for tools, software, laptop or any knowledge.

➤ **Does the system needs any calibration before I can use it?**

No, the system self-calibrated.

The system is a plug and play system, it requires power, sensor inputs and relay outputs and it's working!

➤ **Can the cable be shortened/cut/spliced?**

Yes, the cable can be cut to size. From the factory one end of the cable comes with the end of line resistor installed on but on the other it's open and can be cut to fit the conduit length.



# Long Range - Fiber Protection

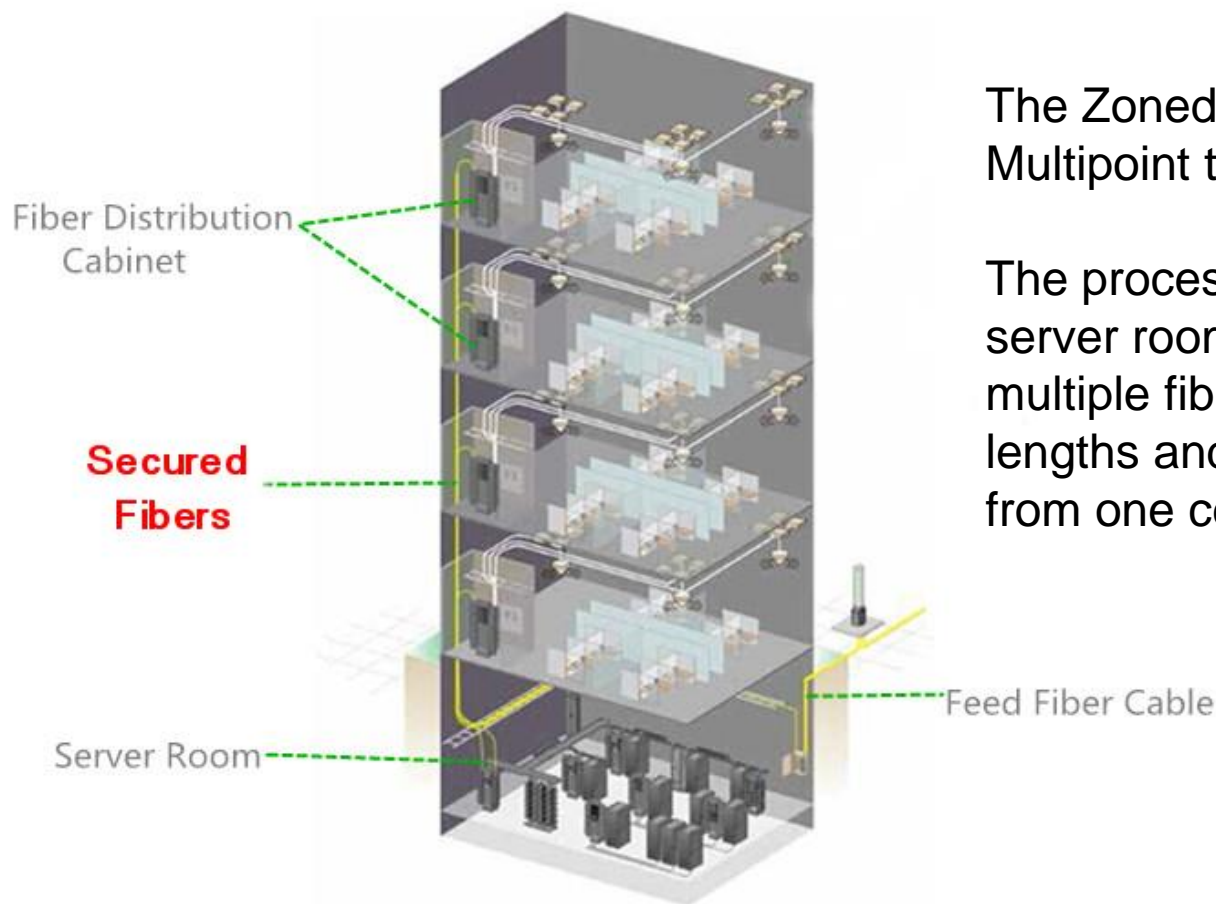


Physical Cyber  
Security System  
Based on Fiber Optic  
Cable  
long PDS conduits  
(1000'+/300m+)

Protective  
Distribution System  
(PDS)



# Zoned Multipoint to Point - Fiber Protection



The Zoned system is designed for Multipoint to point protection.

The processor will be located at the server room and is connected to multiple fibers that can go separate lengths and directions to be protected from one central location monitoring.

# Point to Point Fiber Protection – Up To 31miles/50km

Data  
Center/Secured  
Servers



The system is designed for Long haul point to point protection.

The processor will be located at one end and connected to 3 fibers that go the whole length of the infrastructure to be monitored from one central location up to 31mile/50km in one direction.

Data  
Center/Secured  
Servers



Long Range  
Physical Cyber  
Security System

Pipe for laying  
Fiber optic  
cables

# Fiber Protection

## Long Range Physical Cyber Security System

### Up to 31miles/50km

Local guard room

APU system interface into  
Vidalert monitoring  
software

APU system

Insensitive  
lead cable

Pipe for laying Fiber optic cables

Can be attach to the outside of the pipe

OR

Can be use dark fiber



# RBtec Inc.

Maryland USA

Tel: 301-760-4016 Fax: 301-984-2317

Email: [Info@rbtec.com](mailto:Info@rbtec.com)

[www.rbtec.com](http://www.rbtec.com)

All images are for illustration only

## THANK YOU!

This document has been written and produced by RBtec to provide the reader with as much technical and other information as possible about RBtec its products and its services. Copying any of its contents without prior permission from RBtec is strictly prohibited. This information is provided for the purpose of initial evaluation of RBtec's products and services. In keeping with RBtec's policy of continuous development, RBtec Ltd. reserves the right to alter these specifications without notice.