



Physical Cyber Security System Detect Them Before They Enter

Physical Cyber Security System Up To
2000ft/600m Per Processor

Who is our Customer

Government / Tech Industry / Defense contractors

- Requires physical security for network communication on top of it's cyber security.
- Has sensitive/confidential information going through public areas with a risk of hacking or vandalism.
- Currently has unsecured network infrastructure or requires daily visual inspection.

The Opportunity

Sell to untapped market – Low to no competition

- Something “new” to talk about with existing customer database
- Increase sale total by selling 1 system for few thousand Euros/Dollars with high profit margin.
- Increase sales from current customers and appeal to new customers, not just a different brand of existing product.
- Be able to provide a solution to an urgent problem end users and integrators have and don't know the solution.

ShortPDS

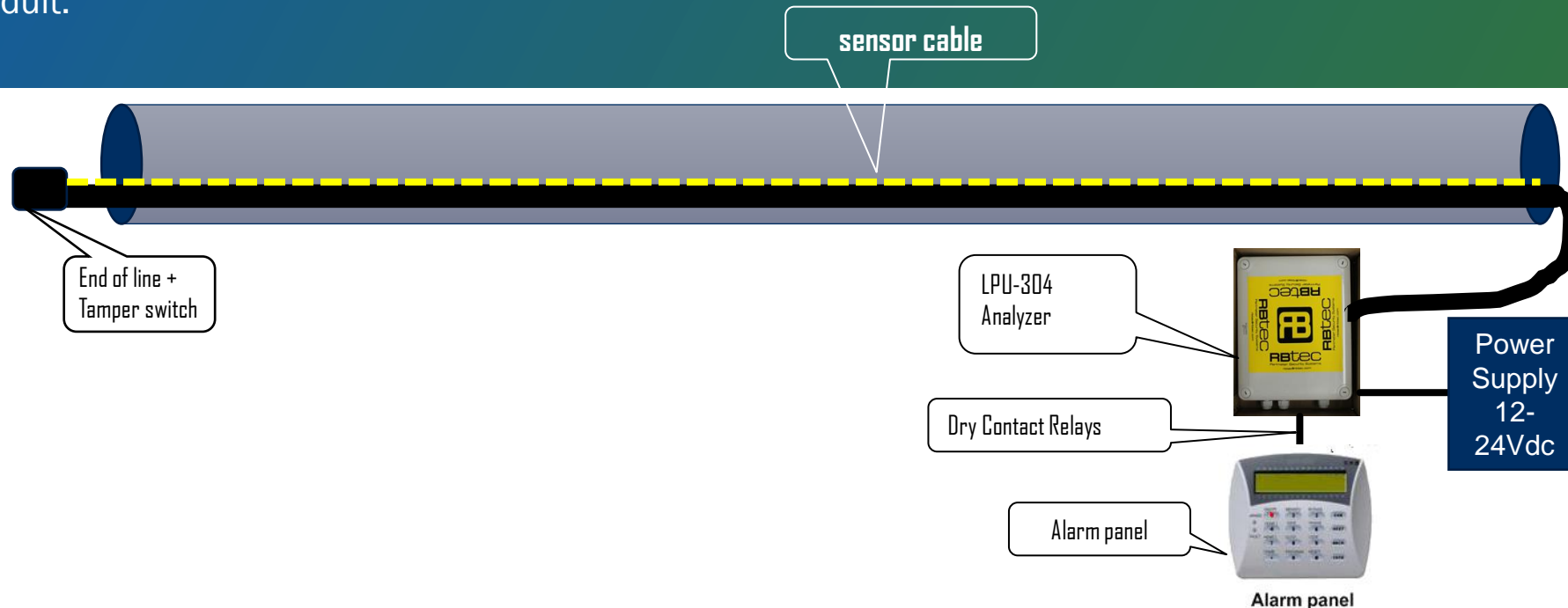
Short Range Copper Based - Infrastructure Protection

Simple, Reliable and Affordable Conduit

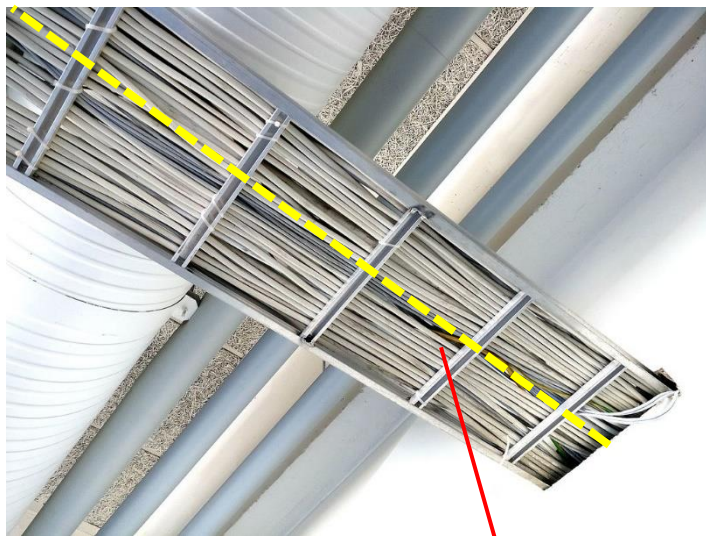
The easiest and most reliable sensor cable in the market!

The PDS is a sensor cable for conduits and pipes, capable of detecting cutting, drilling and disassembling of the conduit.

- ✓ Plug and play – Sold in different length and can be cut to size.
- ✓ No training or special tools required, comes with installation manual.
- ✓ No need for Dark Fibers, completely independent system.
- ✓ 24/7/365 monitoring for tampering – eliminates daily visual inspections
- ✓ No Calibration - 22 Levels of sensitivity adjusted for drilling and cutting easily adjusted with dip switches.
- ✓ The sensor can be attached along the outside of the pipe/tray or threaded inside the pipe/tray.
- ✓ 2x Dry contact relay alarm outputs (NO or NC), can be connected to any alarm system/DVR/access control/SCADA.



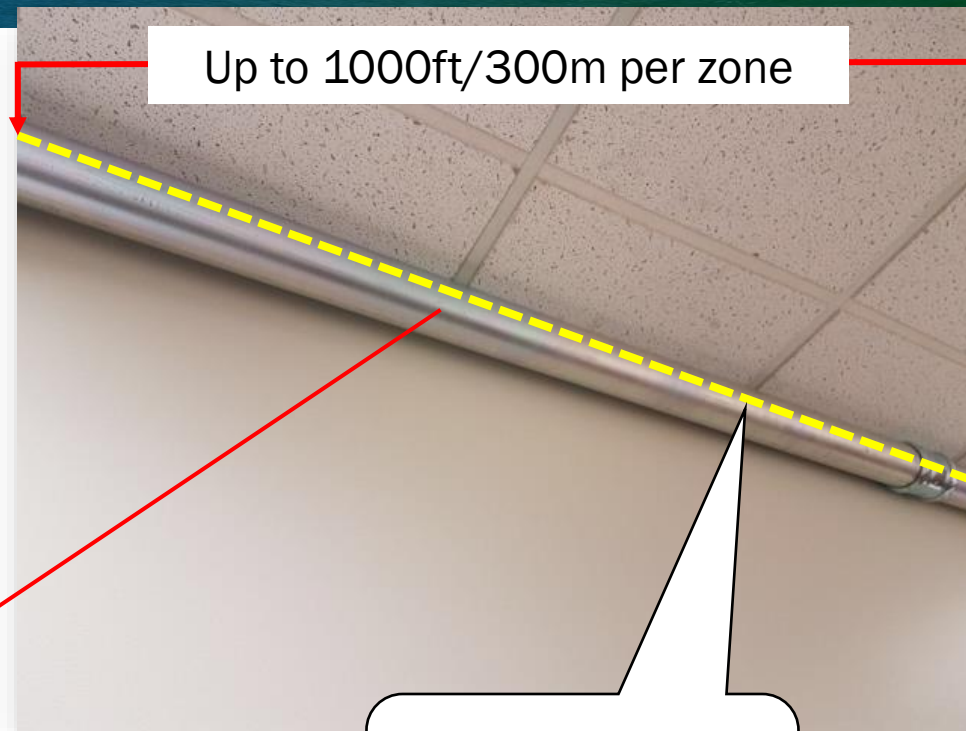
System Layout



On Cable
Tray and
Raceway



Alarm panel

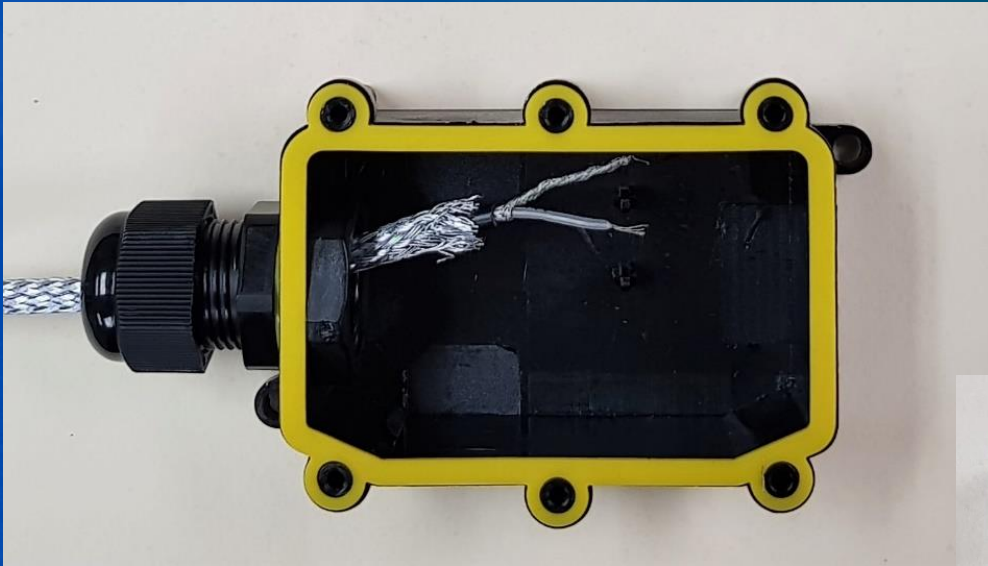


Up to 1000ft/300m per zone

Above/Under
Dropped Ceiling

End Of Line Termination Kit - MCTR

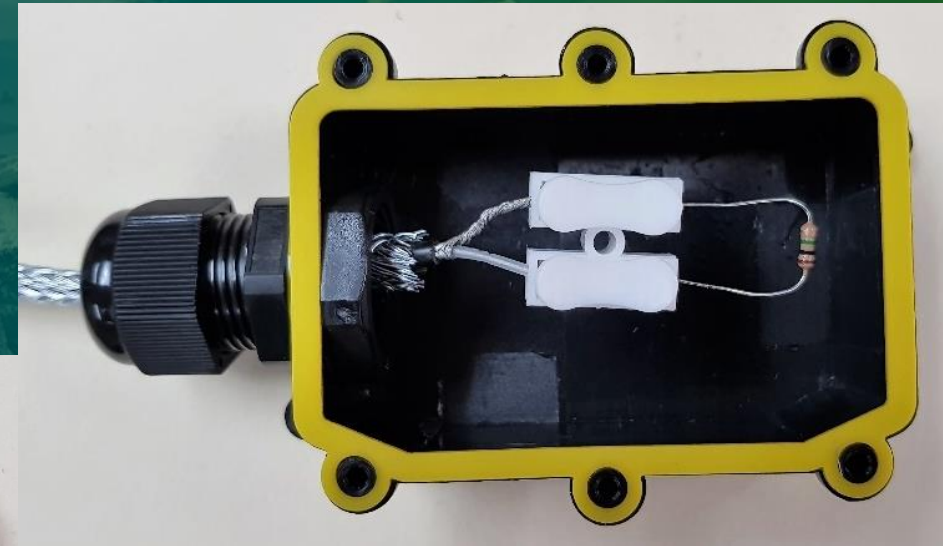
Step 1
Push the cable into the
junction box



Step 2
Connect the resistor
into the push
terminals



Step 3
Connect the sensor cable
into the push terminals



LPU Processor

SPECIFICATIONS:

Operating Power Requirements:

- 12 – 48VDC 200mA @ 12VDC
- 24 – 70VAC

Lightening Protection:

- 2 Layer Surge Protection
- Gas Discharge Devices on all Inputs/Outputs & Communication line.

Alarm Inputs

- 4x Ironclad sensor cable inputs.
- 4x Intrusion and Line monitoring for accessories like magnets, contact, microwaves and motion detectors.
- 1x Tamper switch.

Zone Status & Sensitivity Levels

- 8x Arm/Disarm via Jumper
- 22 levels of sensitivity per zone on board.
- 256 Levels of sensitivity via software
- 1 Power Outage relay.

Alarm Outputs

- 8x Dry contact relays with contacts rated 1A @ 12VDC.
- 1x Tamper switch relay
- 1x Power Outage relay.

Connector:

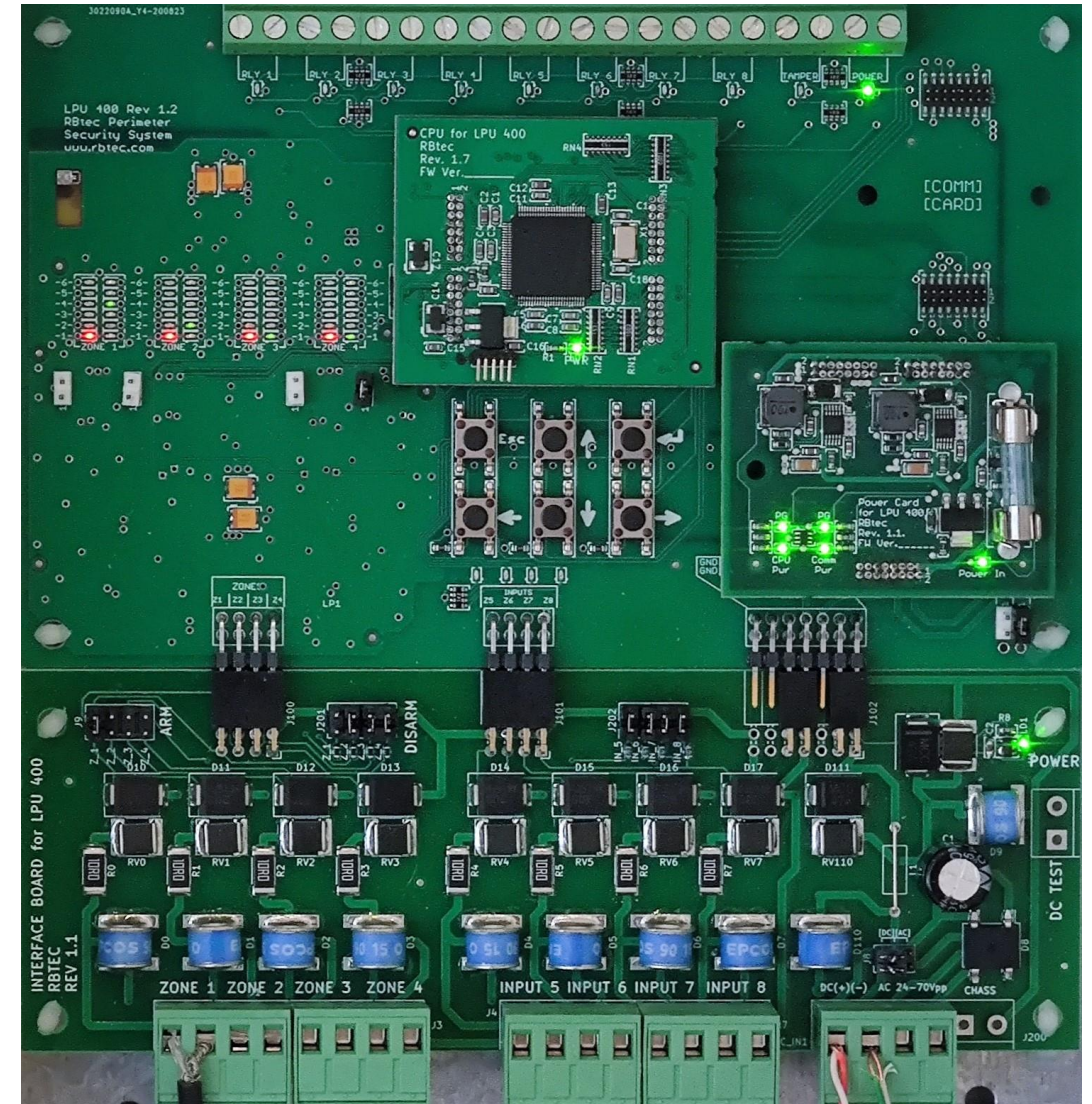
- Sensor Input - 8x Screw terminal – Pair per zone.
- Alarm Output - 8x Screw terminal – Pair per zone

Enclosure:

- NEMA 4X, IP-66
- 9.5 x 7.5 x 2.75" (24 x 19.5 x 7.0cm)
- Weight: 2.2 lbs. (1Kg)

Environment:

- Operating Temperature: - 40° to 221°F (-40° to 105°C)
- Relative Humidity up to 98% non-condensing.



Packaging options per Micalert kit

Zone number / Zone length	1 Zone	2 Zone System
75m / 250ft	75m / 250ft	75m / 250ft Per zone – 150m / 500ft System
150m / 500ft	150m / 500ft	150m / 500ft Per zone – 300m / 1000ft System
300m / 1000ft	300m / 1000ft	300m / 1000ft Per zone – 600m / 2000ft System

Types of MICALERT kits



Why RBtec?

Wide Range of Solutions

Broad selection of technologies, sensors, and solutions to provide customers with exceptional solution flexibility

Stability and Experience

With over 34 years RBtec is one of the most experienced companies in the market

01

03

02

04

Customer Satisfaction

At RBtec customer satisfaction is above all.

Israeli Made

USA Based and Stocked
Tech Support and Stock in Derwood Maryland



A Growing World Presence

RBtec has provided systems for more than 2,500 security installations
in more than 35 countries around the world.



Thank you! Any Questions?

Dori Ribak
VP Marketing & Technology
dori@rbtec.com

This document has been written and produced by RBtec to provide the reader with as much technical and other information as possible about RBtec its products and its services. This presentation and all photographs are © Copyright RBtec. All Rights Reserved. The use of any of the photographs from this document without the written permission of the creator is strictly prohibited and violations will be pursued to the furthest extent allowed under the law.

This information is provided for the purpose of initial evaluation of RBtec's products and services. In keeping with RBtec's policy of continuous development, RBtec. reserves the right to alter these specifications without notice.

